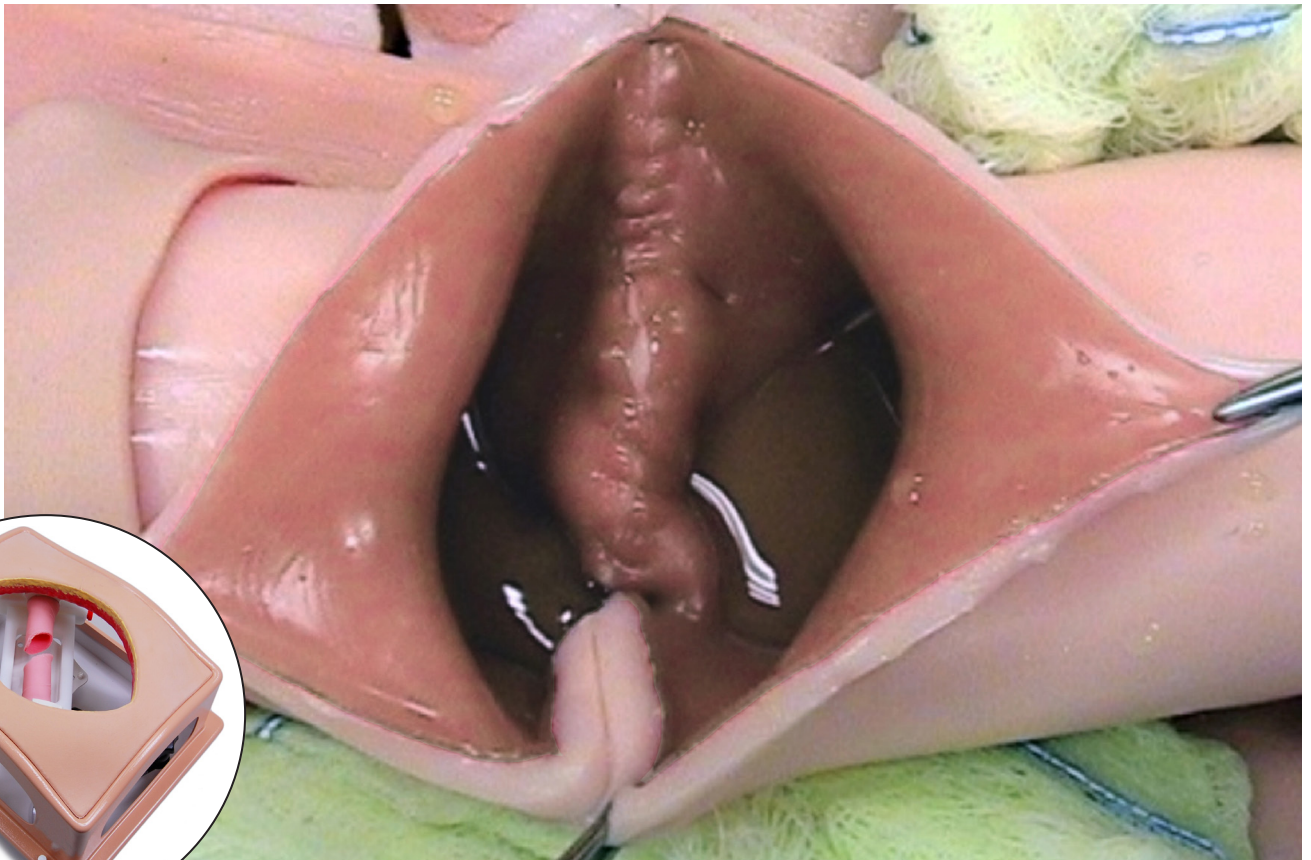




the**chamberlain**group

Belly Case: Skills Training for General Surgery

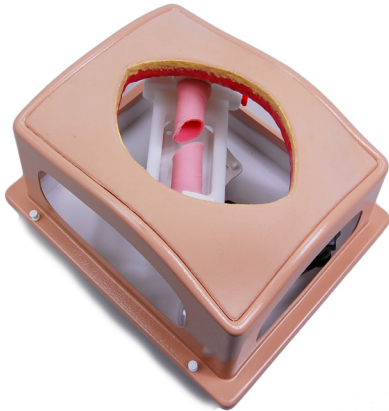


BELLY CASE IS A PLATFORM FOR TRAINING:

- **Open Bowel Anastomosis**
- **Small Vessel Anastomosis**
- **Ostomy Suturing**

Belly Case provides surgical learners with a platform for deliberate practice of basic bowel anastomosis skills in a safe, repeatable environment. **Users not only have the experience of suturing with The Chamberlain Group's realistic mimetic Tactility Bowel but of doing so within the constraints of the abdomen.** A face validity study was performed with expert practitioners completing single- and double-layered hand-sewn anastomoses on porcine bowel, a competitive synthetic bowel product, and the Tactility P1 Bowel. The study concluded that the Tactility product offered similar levels of fidelity to human tissue as porcine bowel and provided a greater level of realism than the competition.

TO ORDER CALL: +1.413.528.7744 or 800.562.7569 **info@thecgroup.com**



BELLY CASE IS A PLATFORM FOR TRAINING:

- **Open Bowel Anastomosis**
- **Small Vessel Anastomosis**
- **Ostomy Suturing**

BELLY CASE provides surgical learners with a platform for deliberate practice of basic bowel anastomosis skills in a safe, repeatable environment.

BELLY CASE includes:

- Suitcase Abdomen
- Midline Incision Bib with Abdominal Incision (7" x 5")
- Ostomy Bib with dual Ostomy Perforations
- Positionable arm
- Bowel and Small Vessel Anastomosis Stand with Patency Assessment Capability
- Syringe for Patency Assessment
- Carrying Case



Options and Replacements:

Tactility Mimetic Bowel 10" lengths, 6-pack, #2128

Tactility Mimetic Bowel 10" lengths, 12-pack, #2129

4mm Vessel (0.8 mm wall), #1128

3mm Vessel (0.8 mm wall), #1127

4mm Target Vessel (3" length), #1371

4mm Graft Vessel (3" length), #1370

3mm Target Vessel (3" length), #1368

3mm Graft Vessel (3" length), #1366



Quantity discounts may be available for orders in excess of twenty units of any item. Items are made to order, please allow up to six weeks from date of confirmed order to ship date. Items may be returned for credit only, a restocking fee may apply.